



5905 LANDON LANE

Expected Delivery August 2026



Award Winning Homes



ROSEHILL – grand prize winner of the 2024 Annapolis Home Magazine Builder and Fine Design Awards.



BONIFANT – three time award winner, including Home & Design Magazine Excellence Award 2025.

DISTINCTIVE INTERIOR APPOINTMENTS

- TecWood Camden Isle® hardwood flooring in Bleeker Beige throughout the main level, Owner’s Suite, 1st and 2nd floor hallways
- 10’ ceilings and 8’ tall solid core interior doors throughout the first floor
- Floor to ceiling brick fireplace surround in General Shale Graysburg, matching the front exterior
- SimpliFire 55” Scion Linear Built-In Electric Fireplace
- Custom built 5” wood mantel stained to match Birch Frontier cabinets
- Oak stairs with painted risers, round satin black iron balusters and treads, newel posts and hand rails stained to match flooring
- Faux paint finish and tray ceiling in the Owner’s Suite
- Laundry Room with ceramic tile flooring, pass-through linen shelving and GE smart front load washer/dryer
- Cubbies in Mud Room with shiplap accent and stained poplar seat
- Wallpaper detail in the Dining Room, accent wall in the Study

CHEF’S KITCHENS

- Stainless steel Energy Star® appliances:
 - ▶ 36” Thermador Professional Series six burner gas rangetop
 - ▶ 30” Thermador Professional Series double wall oven
 - ▶ 36” Zephyr Monsoon Connect Smart Range Hood Insert
 - ▶ 36” Thermador built-in french door refrigerator, bottom freezer, panel ready
 - ▶ 24” Thermador Star Sapphire® Professional Dishwasher
 - ▶ 24” MicroDrawer® Microwave
- Custom curved wood fume hood, stained Birch to match Birch Frontier cabinetry
- Semi-custom Koch Classic cabinets in Birch Frontier stain and Accessible Beige
- Q Quartz countertops in Calacatta Idillio®
- Dune Tabaraca Blanco 3 x 9” glossy wall tile backsplash
- Wet Bar with second dishwasher between Dining Room and Kitchen
- Signature Hardware Beasley Pre-Rinse Pull Down Kitchen Faucet

OUTSTANDING CUSTOMER SERVICE

- “Call Anytime” dedicated email/phone support from our Warranty Team
- Our team is available to respond to your questions and concerns even long after your warranty period has ended.

FEATURES



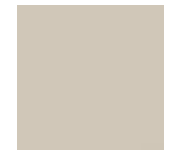
SimpliFire Scion 55” Electric Fireplace



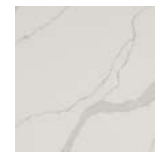
Custom Curved Wood Fume Hood stained to match Birch Frontier cabinetry



Birch Frontier cabinetry



Accessible Beige cabinetry



Calacatta Idillio countertops



Bleeker Beige flooring



Satin Black rails, hardware



Tabaraca Blanco tile backsplash



Award Winning Homes



ELGIN – Gold Winner, Speculative Home, 2025 MBI Montgomery County Custom Builder Awards



GERANIUM – Maryland Building Industry Association (MBIA) 2022 MAX Award Winner

ELEGANT SPA BATH

- Q Quartz vanity tops in frost white
- Signature Hardware Sheba® 72" acrylic freestanding soaking tub
- Signature Lexia® floor mounted tub filler faucet w/ hand shower in polished nickel
- Delta Bowery® widespread bathroom faucet in polished nickel
- Delta Bowery® Monitor 17 Series pressure balanced shower system in polished nickel
- Curated designer ceramic tile:
 - ▶ 24 x 48 Marvel X Calacatta Apuano matte tile flooring
 - ▶ 12 x 24 Marvel X Calacatta Apuano matte tile shower walls
 - ▶ 24 x 48 Mosaic Groove Blond glazed porcelain tile shower wall accent
 - ▶ 2 x 2 Calacatta Apuano matte tile mosaic within shower floor
- Kohler comfort height elongated toilet with soft close seat

TOP QUALITY CONSTRUCTION

- Anderson 100 Series windows
- Low-maintenance composite exterior trim
- Engineered sub-floor
- Engineered Wood I Beam™ floor system, parallams and PSLs
- Interior and exterior drain tile around foundation
- Maintenance-free Hardie® siding with lifetime warranty
- 6" K-style gutters with oversized downspouts
- 16 SEER air conditioner
- Humidifier on first floor
- Total Home Network Package:
 - ▶ Dual gigabit port LAN Router and embedded firewall
 - ▶ Two ceiling mounted dual band wireless access points
 - ▶ 8 port gig-switch
 - ▶ 6 port power strip with IP controlled power rest module
- Structured wiring with CAT6 and 20" connection center with ports at five locations
- Belt driven Garage door opener with remote, one keypad and WiFi connectivity

This preliminary set of selections is subject to change during production. Please contact our Sales Team for final details.

FEATURES



SignatureHardware Lexia

Sheba Collection
72" Double-Slipper Tub



Delta Bowery
Monitor 17 Series



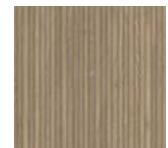
Birch Frontier
vanities



Bleeker Beige
flooring

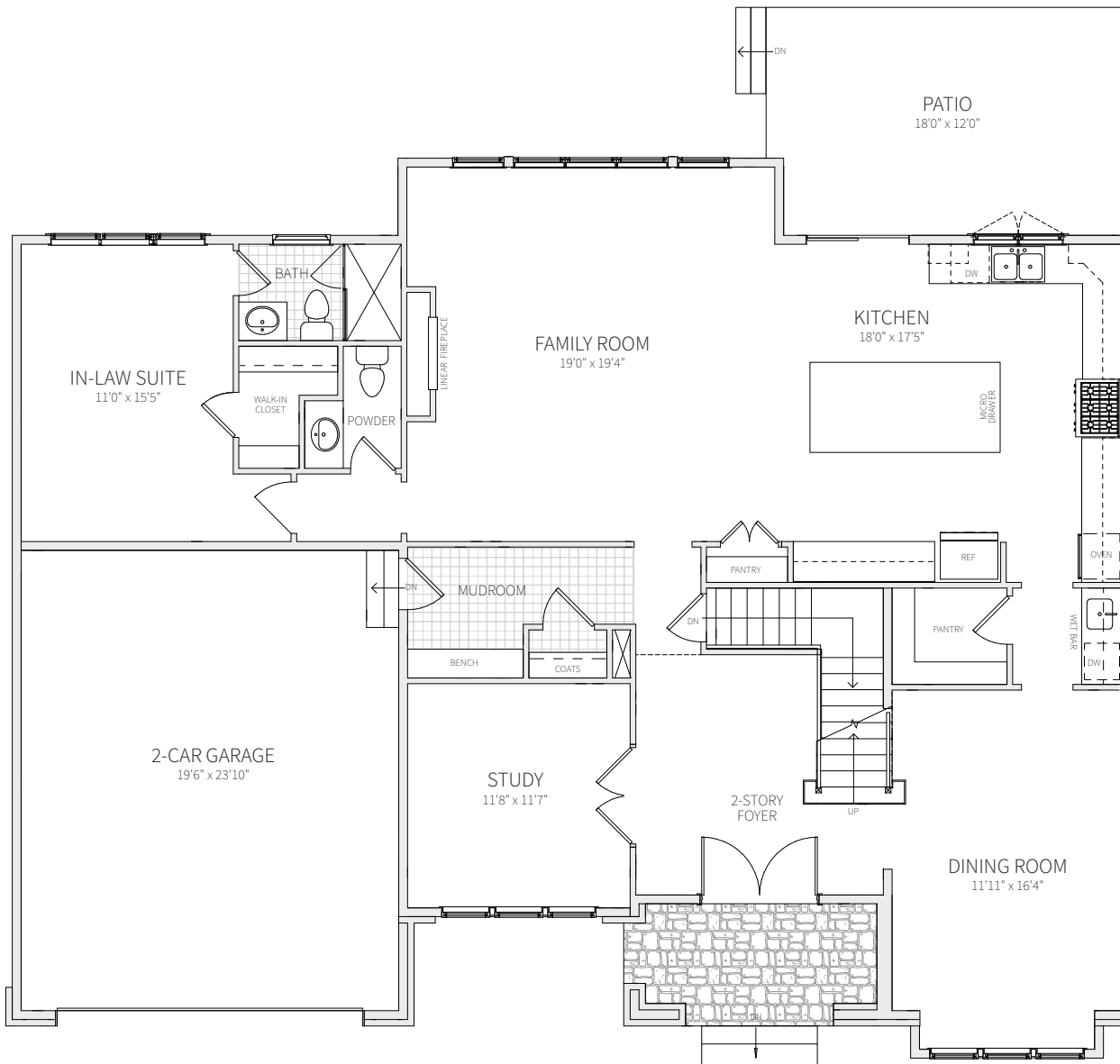


Calacatta Apuano
flooring/wall tile



Blond
accent tile

MAIN LEVEL



Shaping a legacy of community support, enhancement and growth since 1983.

1983

The principals of Classic Homes **founded their first company**, incorporating in Virginia.

1997

Having built **1,500 homes in 14 years**, the original company is sold to K Hovnanian Homes.

2006

Classic Homes of Maryland opens its offices, offering custom and semi-custom on-your-lot homes.

2011

Classic Homes **delivers its 100th home**, named one of DC's fastest growing companies by Smart CEO magazine.

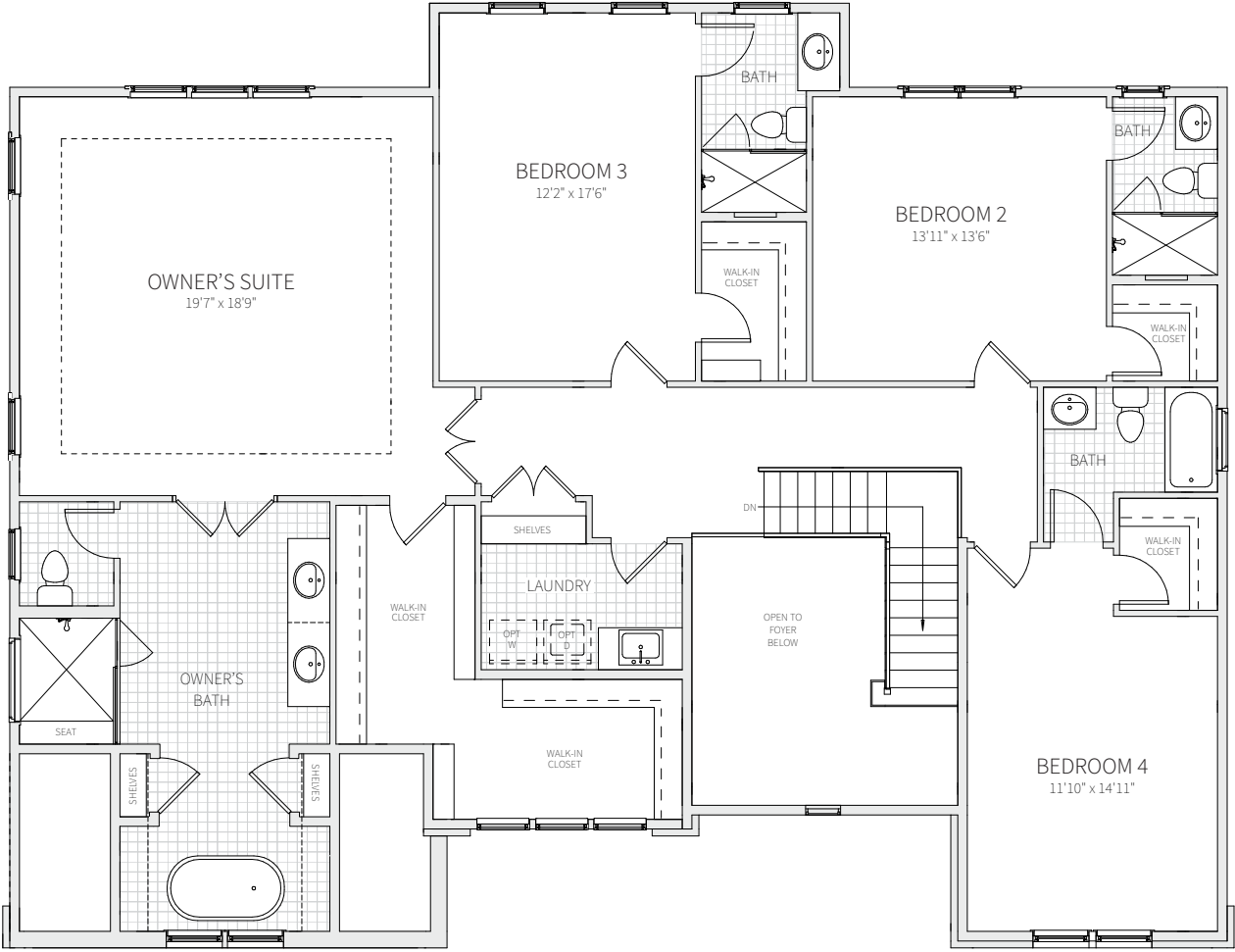
2021

The office of Classic Homes are relocated to **newly renovated facilities** at "Sixty One Sixteen" in N. Bethesda.

UPPER LEVEL



Media Coverage

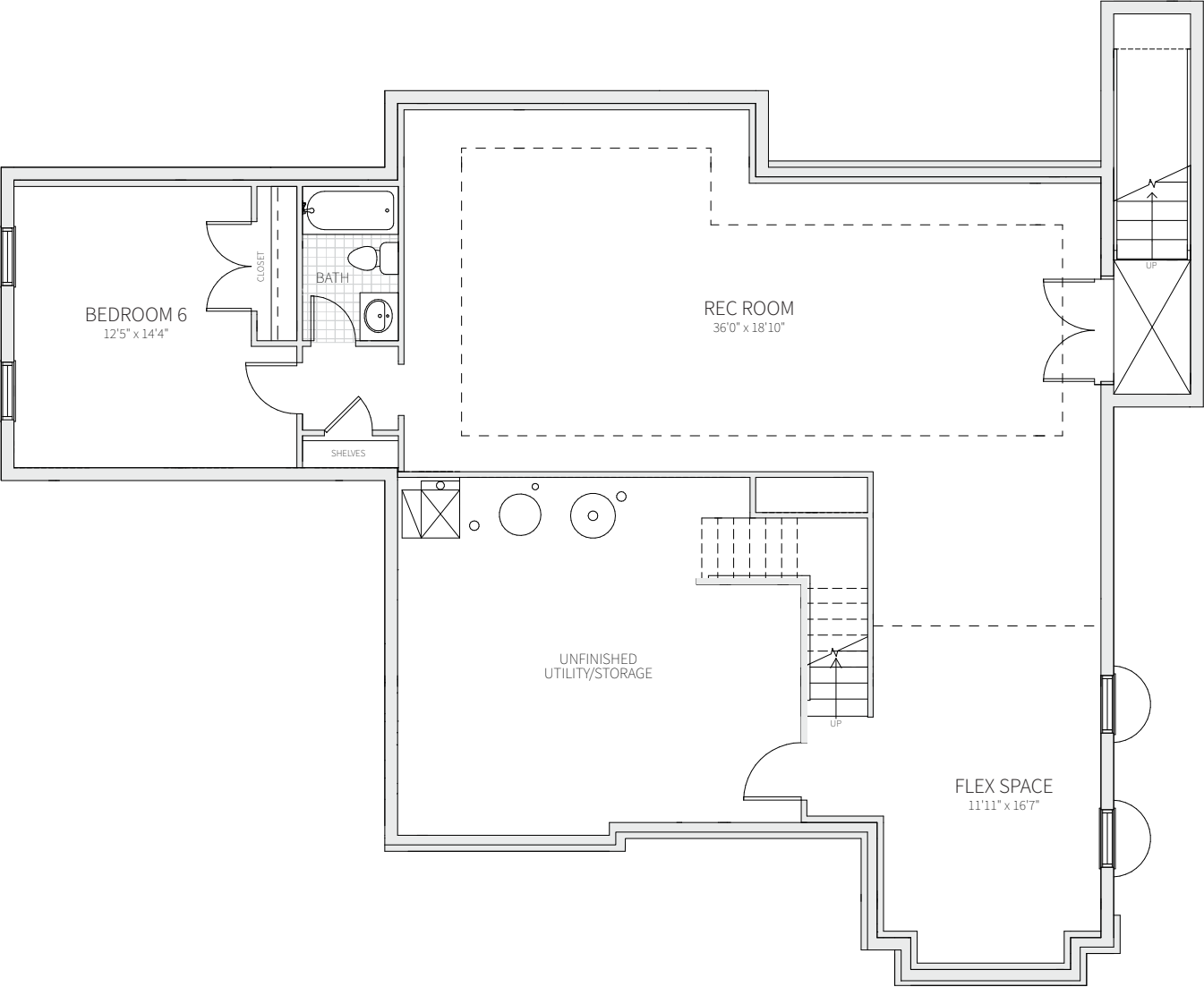


RIVERWOOD – Featured in *Fine Homebuilding* and *Annapolis Home Magazine*.



KINGSGATE – featured in *American Farmhouse Style* and *Bethesda magazine*.

BASEMENT



Trending Designs



HAMPDEN – Our “black” farmhouse design was a viral sensation on Pinterest, with over 3 million impressions and 100,000 clicks.



GLENSTONE – A customer favorite, frequently reimagined in endless color and material combinations.



[Visit our website for photo galleries](#) of our latest work.

At Classic Homes, we have always believed that building a home carries responsibilities that extend well beyond construction.

For more than four decades, our work in this community has been guided by a simple principle: **to be present and responsive when our homeowners need us.**

Quality craftsmanship and thoughtful design matter deeply to us, but they are not the only measure of our work. Trust, follow-through, and standing behind what we build matter just as much.

Experience brings perspective. It allows us to guide our clients through important decisions, to listen carefully, and to stay focused on what truly matters. Doing things the right way has always been central to how we work. Our values are as important as the quality of the homes we deliver.

I take this responsibility seriously and view it as a duty to every family that places its confidence in us.

Homes are where lives unfold. It is a privilege to build them—and a responsibility I do not take lightly.

Dinesh Jain
President