

New Takes for the New Year

# American Farmhouse Style

## The Fresh Face of Farmhouse

Tour Homes with Diverse and Unique Character



Meet our new 2024 Brand Ambassador

Explore DIY shelving, not-so-muddy mudrooms and more

Set a romantic Valentine's Day table

February/March 2024  
 VOLUME 9, NO. 01 • Display until 03/12/2024  
 EG Media Entertainment Plus • \$10.99 US

0 74820 01943 6 03

EG MEDIA INVESTMENTS LLC



The property where the home was built had been a vacant lot that was for sale. Classic Homes built the modern farmhouse with an emphasis on designing it with clean, modern lines. Plank shingles were used on the sides of the exterior. The contrast of the black paint against the white exterior highlights the angled roof lines. The shed dormers are composed of metal, which is traditional, while the window panels have a modern design.

# Building a Modern Farmhouse

Written by **Meryl Schoenbaum**  
Builder: **Classic Homes of Maryland**  
Photography by **Eric Tate of Peak Visuals**

A design-build team explains the nuts and bolts for constructing this trending home style.



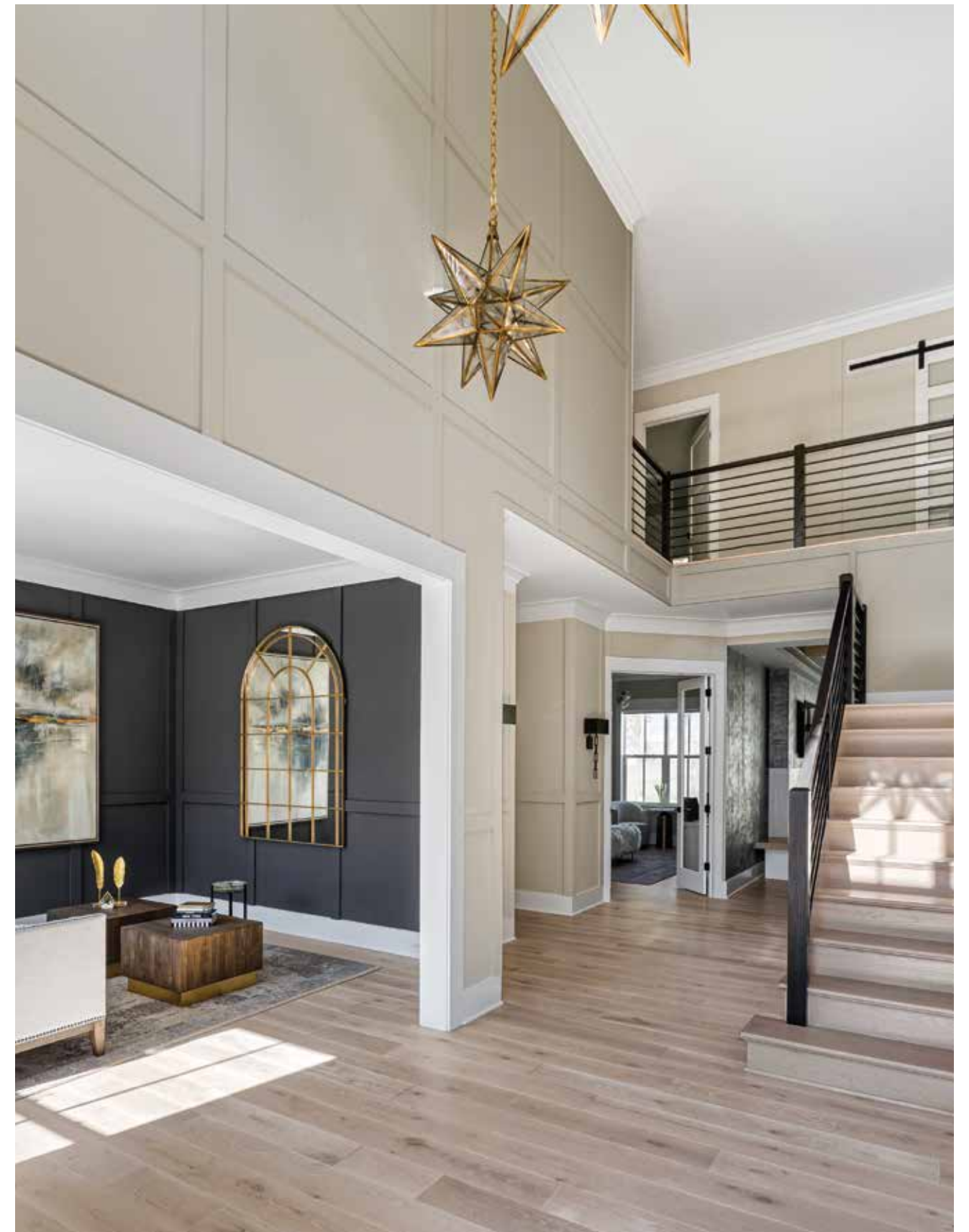


This view shows the open floor plan looking toward the family room. The focus was on modern farmhouse colors. Stained wood beams were used on the ceilings. The interior design accessories blend in with the architecture. The fireplace tile surround and black wood window frames are modern-farmhouse elements.

**Sometimes** an opportunity comes along that you know was meant for you. In this case, the project was to build a modern farmhouse in Potomac, Maryland, and the person who knew he was destined to design it was Dinesh Jain, president of Classic Homes of Maryland.

"This project is in the neighborhood I live in, which was a great opportunity to show my kids how a house is built," Dinesh says. "This was a particularly special project to me. Driving by gives me a warm feeling."

Dinesh co-founded Classic Homes of Maryland nearly two decades ago. His family has been building in the DC metro area since 1983. "In recent years, we've expanded further into the luxury design-build market, working with various architects on award-winning, one-of-a-kind custom homes," Dinesh says. "We're committed to continually evolving and growing to meet our clients' needs and exceed expectations."



To the left of the foyer is the music room with gray painted paneling. The window design is mirrored in the design of the wall paneling. The metal horizontal rails on the second-floor landing are in modern farmhouse style, as is the barn door on that floor. Wide plank natural wood flooring ties all the rooms together. The mirror on the gray wall is opposite a window to reflect the natural light and make the room appear larger.





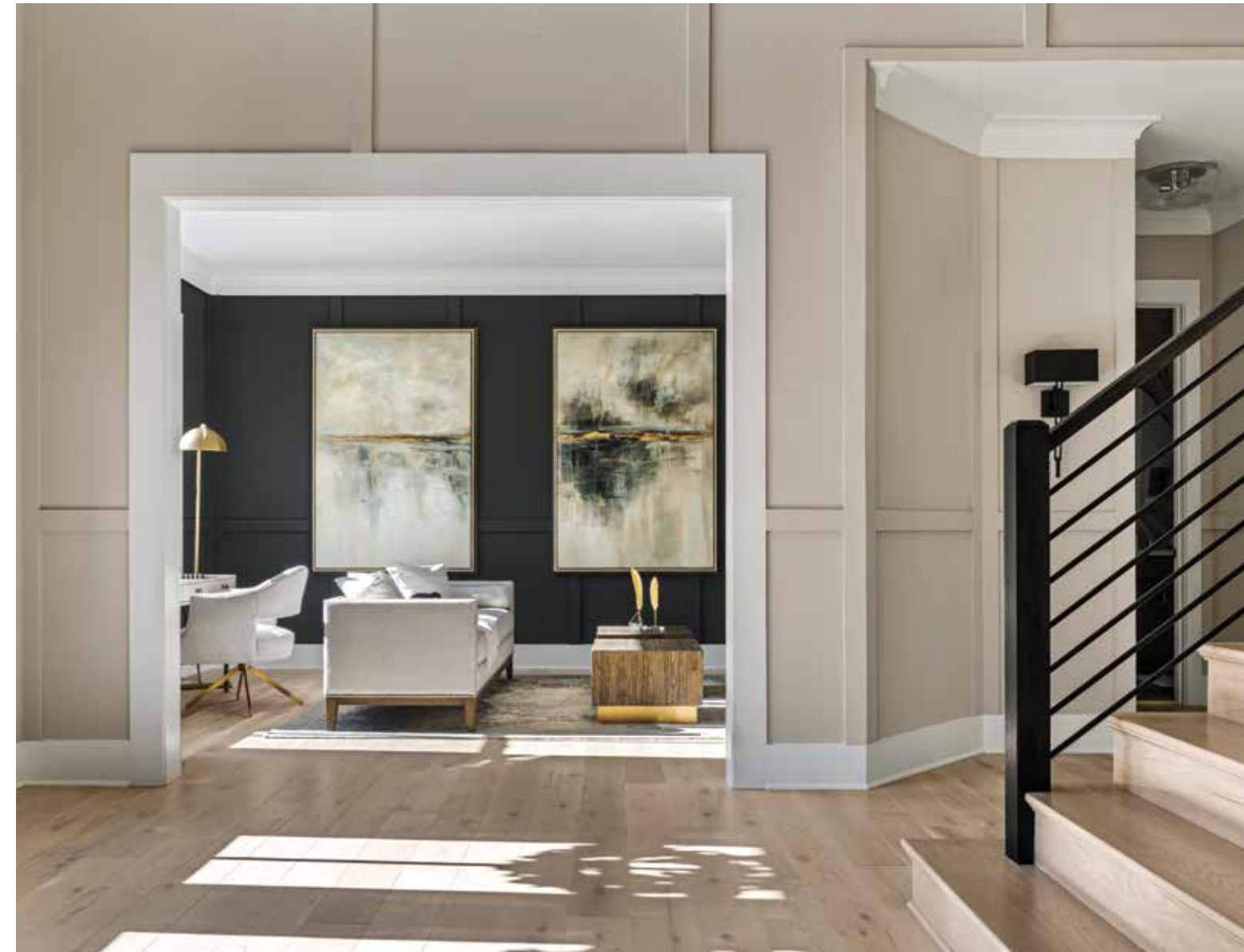
This big open space is a modern take on the farmhouse look. Lots of modern-style windows were constructed for natural light. The main back wall has no cabinets, just shelving. The backsplash accent wall is quartz, which is a very modern material. Also made from quartz were the waterfall island and countertops. The family's pet cat poses as the centerpiece on one of the coffee tables. The doors and windows open to views of the backyard.





Stained wood beams were used on the ceilings. The interior design accessories blend in with the architecture. The fireplace tile surround and black wood window frames are modern farmhouse elements.

As builders and buyers both know, a home's location is a key factor in determining the design and achieving the appeal of the deal. And this location had a lot going for it. "The homesite is located in Fawsett Farms, a well-established premier community in Potomac," Dinesh says. "In recent years, decades old Colonials are being replaced with a variety of unique custom homes in various architectural styles, including Craftsman, Mediterranean, Modern Farmhouse, Transitional and Contemporary."



## Setting the Foundation for Your Home Build

Scott Adashek, director of sales at Classic Homes of Maryland, offers his advice on the most efficient and effective ways to work with builders during your home construction.

- 1)** It is important to choose the firm that can best understand and achieve your needs, desires and goals. A series of meetings starting with an interview process is important.
- 2)** Ask questions about the builder's process, timeline, communication tools and response time to questions, especially regarding the design options.
- 3)** Tour some of the builder's current under-construction homes and, if possible, a delivered home. This can give the client a realistic idea of the builder's work ethic, follow-through and management abilities.
- 4)** Ask for references from past and existing clients. All successful custom builders will have a list of satisfied clientele that can help you understand what went right—as well as what went wrong—during the process.





#### WHAT IS MODERN FARMHOUSE STYLE?

Scott Boren, architectural design manager at Classic Homes of Maryland, keeps his definition of Modern Farmhouse style in mind during his design work. "Modern Farmhouse is a fresh look, with the clean lines of a Contemporary home, but softer and cozier, with Craftsman-like finishes and textures," he says. "The result should feel orderly yet comfortable; a home that is inviting to the eye and rewards you with further detail the closer you look."

Modern Farmhouse style has evolved over the years with a broader color palette and layered details. "Often, we see Modern Farmhouse being white or monochromatic, but that isn't the essence of the style," Scott explains. "Modern Farmhouse has taken on more color in recent years, with rich earth tones, while maintaining its clean lines and layering of details such as wall treatments, shiplap siding, wide-plank flooring, simple tile patterns and other details that give a luxurious yet simple feel to the design."

Other features come into play when designing a modern farmhouse, such as an open floor plan to make the home feel light and bright. "This is a key element in our designs," Dinesh says. "Natural light and open spaces are embedded in our design criteria."

The modern farmhouse featured here was built by Classic Homes of Maryland in 2023 and has two floors, four bedrooms and 3.5 baths.

This view of the kitchen spotlights the design decision to have a flat back accent wall instead of a bank of cabinets. The breakfast area makes the space an eat-in kitchen. The paneling under the island mirrors the window panels.





#### A LOOK INSIDE

As soon as you step through the front door of this farmhouse it is evident that a great deal of thought was put into the design and building materials, starting with the entryway. "Note the attention to detail as the walls are treated with a simple 1x4 painted grid overlay, which adds visual interest," Scott says. "The owner opted to have fun with the lighting fixtures and the simplicity of the architecture makes these sculptural selections really pop in the space."

The design of the family room illustrates the importance of finding a balance between adding modern features and retaining farmhouse charm. "The emphasis on the main living space is modern, but it retains the warmth of the farmhouse through the use of texture, colors and the linearity of the coffered ceiling and the vertical lines of the fireplace treatment," Scott explains. "The large expanse of glass along the rear of the family room brings an abundance of natural light into the space—also typical of Modern Farmhouse," he says. "The use of wide-plank flooring helps provide both the sense of warmth and the ties into traditional farmhouse style."







The study was designed with an open space for a daybed and built-in shelving for storage and display. The flat baseboards and window trims are modern-farmhouse elements.

The kitchen's open, airy feel was achieved by combining the open floor plan with lots of opportunity for natural light to shine through it and glass shelves. "The kitchen continues the use of large windows found in the open family room," Scott says. "The use of glass shelving avoids the cluttered feel of cabinetry, keeping the kitchen light, open and luxurious."

#### EXTERIOR ELEMENTS

The builders' attention to detail in staying true to Modern Farmhouse design wasn't confined to the home's interior. Its exterior and property were also given careful consideration. "Board-and-batten siding rising to multiple steep-peaked roofs is a must for the Modern Farmhouse style," Scott says. "The addition of some shed roof awnings over some second-story windows also evokes the tradition of the farmhouse in a modern interpretive style," he says. "Lastly, the all black windows with vertical window grids are particularly contemporary. The subtle emphasis on vertical lines in the exterior of the home is also a marker of Modern Farmhouse design."

**SEE SOURCES, PAGE 112.**



top | The primary bathroom was constructed as an ensuite to the master bedroom. The common element for all three photos on this page is tile accent walls. Having an accent back wall draws the eye through the room. With its white and brass mixed mosaics, the tile behind the bathtub is an elegant touch. The standing tub design is a modern farmhouse element.



above, left | The ceramic-tile texture in this powder room ties in with the rest of the house for a glazed "color and crackle" effect.  
above, right | The first-floor full bath features an accent wall in Daltile's Calacutta Sky herringbone pattern 4" x 12" tile.